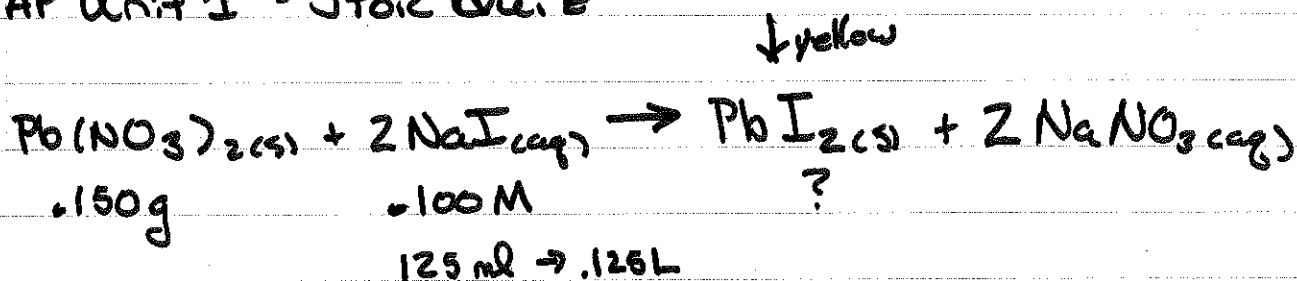


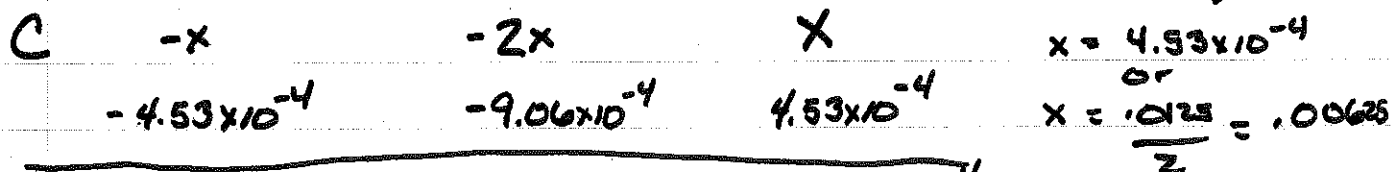
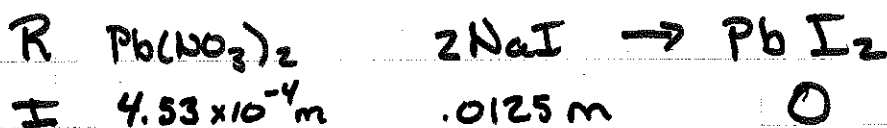
# AP Unit 1 - Stoic Quiz



↓ yellow

$$\left( \frac{.100 \text{ moles NaI}}{1 \text{ L}} \right) \left( \frac{.125 \text{ L}}{1} \right) = \boxed{.0125 \text{ moles NaI}}$$

$$\left( \frac{.150 \text{ g Pb}(\text{NO}_3)_2}{1} \right) \left( \frac{1 \text{ mole Pb}(\text{NO}_3)_2}{331.2 \text{ g Pb}(\text{NO}_3)_2} \right) = \boxed{4.53 \times 10^{-4} \text{ moles Pb}(\text{NO}_3)_2}$$



0 Limiting Pb(NO <sub>3</sub> ) <sub>2</sub>	.0116 Excess	4.53 × 10 <sup>-4</sup>
--	-----------------	-------------------------

4.53 × 10<sup>-4</sup> moles PbI<sub>2</sub> produced